

FILO MENA

Aparthotel



SUMMER IN THE HIGH ALPS

Come and stay here and enjoy your very own feel-good holiday. No matter how you prefer to enjoy the enchanting natural surroundings, the facilities and the wide range of food and drink, our hotel – in a quiet location and yet right in the heart of Lech – is the perfect place to start.

FEEL FREE

ENJOY SPACE AND FREEDOM

Select the option that best suits your needs from our wide range of rooms and apartment types: from a cosy single room with a queen size bed (140 cm wide) to a spacious apartment for six, featuring a kitchenette equipped with everything you'll need, a balcony and two bathrooms. All rooms and apartments come with cable TV, radio, a telephone and a room safe. The kitchenette has an electric oven (with two hotplates), microwave, dishwasher, fridge and filter coffee machine.

4-STAR SERVICE

Our guests enjoy the all-in service you'd expect from a hotel: laundry pack with fresh linen, tea towels, hand towels, bath towels and bathrobes. The price for an overnight stay includes a daily clean of your apartment (except the kitchenette) as well as a final clean, electricity and heating. A parking space, either right outside the hotel or in the Mühlegarage (just 5 minutes' walk from the hotel), is also included.

EVERYTHING'S NEARBY AT THE FILOMENA

Right next door are a bank, a bakery and the Filomena shopping centre with a supermarket and a number of small boutiques. Cable cars, hiking trails and a bus stop for the hiking bus are just a stone's throw away. Lech offers daily guided theme hikes including a herb hike, a hike in the footsteps of the Walser people and a Geoweg geological excursion.

HOLIDAY TIME IS FAMILY TIME

There's plenty for young guests and those still young at heart: a bright and colourful children's games room for the little ones and a young people's room for cool kids. There are loads of games to keep families entertained, such as table tennis, table football, go-carting, darts and air hockey. And to ensure that even the youngest guests will feel as happy as they do at home – if not more so – we have put modern, child-friendly furnishings in all our rooms and apartments.





Lech and the Arlberg region: breathtaking mountain backdrops, hiking trails and paths that take you along the water and through the Alpine terrain. The perfect place for an active holiday in the fresh air with the whole family, with a wide range of activities to enjoy.

FEEL JOY

ENJOY THE COUNTRYSIDE AND SWITCH OFF

Our region and the village of Lech are the ideal location for spending a few relaxed days out in the open air. From magical hiking trails through to stress-free relaxing after a day's activities, we promise unbridled enjoyment. Choose between slow-paced hikes, trips with a guide, a programme tailored to active families and extreme challenges such as a summit climb. Hiking buses offer a convenient way to get to your starting point.

STAY ACTIVE THROUGHOUT THE SUMMER

A mountain summer in the Lech region means beautiful days spent in harmony with nature. Look forward to sunrise and sunset hikes, clear mountain air and majestic panoramic mountain views.

A SUMMER HOLIDAY WITH US

Our hotel is a place where you can stay and holiday completely stress-free – and enjoy a unique feeling of freedom. It's up to you whether you spend a cosy evening cooking together with your loved ones in your apartment or treat yourself to dinner in one of the nearby restaurants. Instead of coming down to the breakfast room for your breakfast buffet, you can also have your rolls sent up straight to your room. We'll do our best to be as flexible as possible in order to make your holiday a relaxing experience and will be happy to give you some tips.

MOUNTAIN BREAKFAST

There's something particularly exhilarating about enjoying breakfast way up high while taking in some fantastic views, in this case the Rüfikopf, Kriegeralpe or the Wolf mountain huts. All of these are within easy reach thanks to cable cars and lifts.

FEEL NATURE

THE VILLAGE OF LECH AND ITS UNIQUE CHARM

As the years have gone on, our local area has managed to preserve its village character, something we are very proud of. We try and preserve resources as best we can, look after our countryside and support local agriculture.

SUMMER IN THE MOUNTAINS

In the mountains, time passes differently in summer. The early mornings are fresh and clear and, even if things get really hot around and about, the temperature here remains balmy. We are at the perfect height for hikes and walks, and Lech and its surrounding area boast 350 km of hiking trails split into both short and long stages. Look forward to some truly special experiences out in the countryside with its flowers in full bloom, rolling mountain meadows and unique late-summer spectacles of bright colour.

TAKE A BREAK, ALPINE-STYLE: REFUEL AT A MOUNTAIN HUT OR PICNIC BY THE LECH RIVER

The Lech river, which flows right past our hotel, offers a great many spots to stop and take a breather along the Lechweg trail all the way from its source to the falls. Some trails are well suited to tackling with a pram. Numerous huts serving refreshments await you on your hikes. There's a theme for everyone: from bike routes and herbal hikes through to summit hikes accompanied by a guide.

BARBECUE SPOTS

with seating, firewood, barbecue area with rack.

Barbecue spot

LECHWEG ZUGER SÄGE

For Lechweg hikers in the Zugertal valley. Tip: the Zuger Säge sawmill is open to visitors.

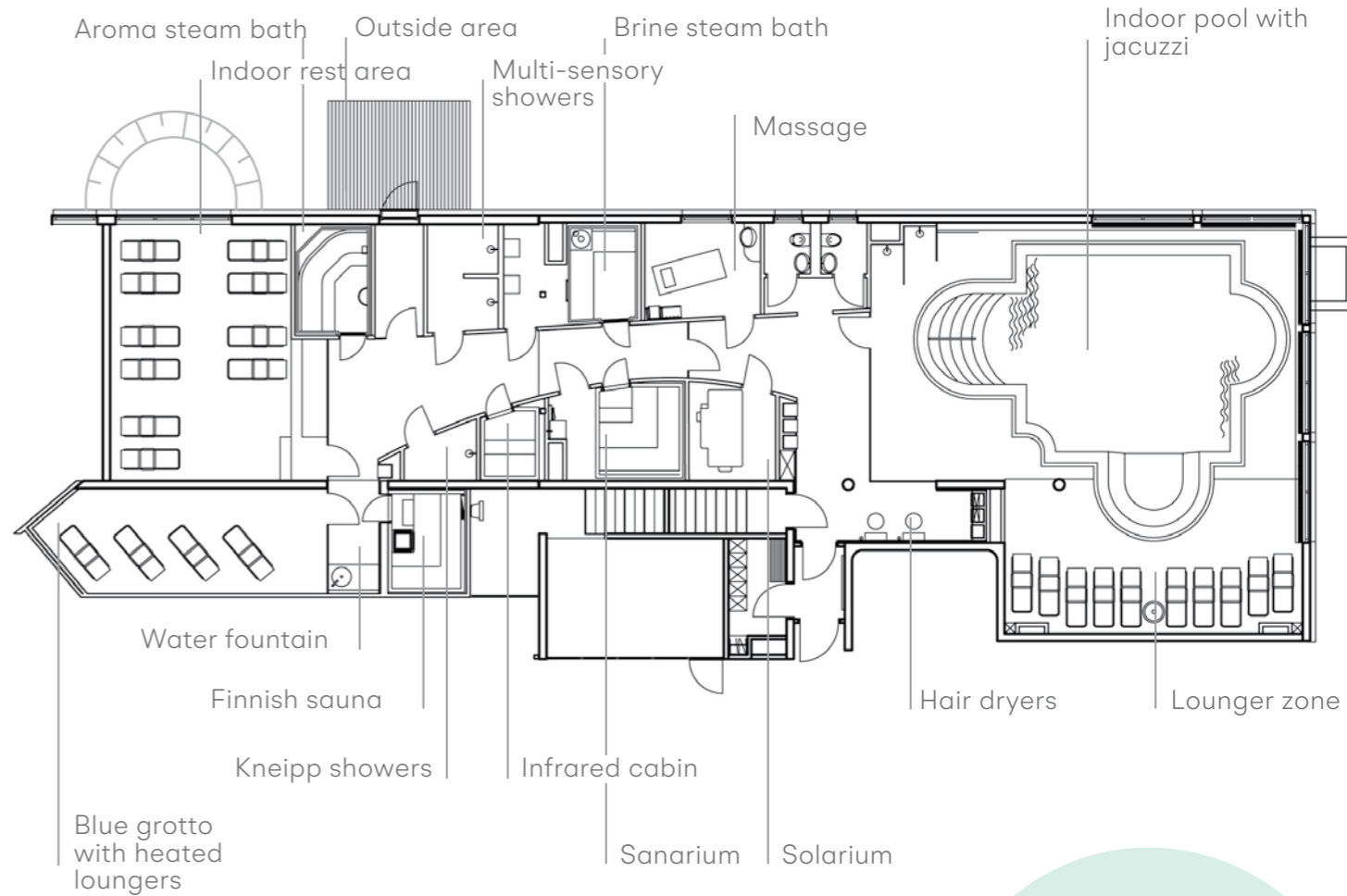




FEEL JOY

Our own indoor pool (9 x 8 m), which boasts a wonderful view of Lech's stunning peaks, is filled with fresh Lech spring water at a warm 29°C. The jacuzzi, whirlpools and massage jets are great for relaxation, while the more energetic ones can swim their lengths in the pool and the little ones can simply paddle away to their hearts' content. Because there's plenty of room, everyone – no matter their age or size – can have a really enjoyable time. And since our mineral water is from the tap, you may well notice a remarkable effect.

Our spa area is ideal for relaxation and features a Finnish sauna, aroma steam bath, sanarium, brine steam bath and infrared cabin. Should your muscles need a massage after a day of sporting activity, then simply book an appointment at reception.



Relax, unwind,
revitalise yourself and feel
the invigorating and
cleansing effect of warmth
and water.

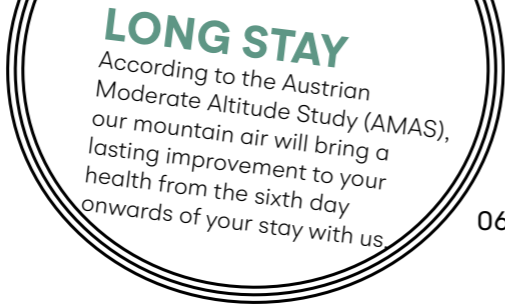
Indoor pool:
7:30 am to 8 pm
Spa area:
4 pm to 8 pm
Open daily
(alternately):
Aroma steam bath /
infrared cabin
Brine steam bath /
infrared cabin

OUTDOORS: LECH FOREST SWIMMING POOL

25 m sports pool, aquafit,
bubble lounger, massage
jets, children's and baby pool,
wide wavy slide

SUMMER PRICES

JUNE TO SEPTEMBER 2023



06.07.23—10.09.23

KRIEGERHORN
Single room | 1 person | 17 m²



€ 70

Queen size bed (1 bed 140 cm wide), bathroom, separate WC, no kitchenette, no balcony

SCHAFBERG
Double room, 2 people, 32 m²



€ 140

Bedroom and living room, double bed (can also be made into twin beds), bathroom, separate WC, balcony, no kitchenette

BIBERKOPF
Apartment, 3 people, 54 m²



€ 210

1 double room, 1 single room, living room with kitchenette, bathroom/WC, separate WC, balcony

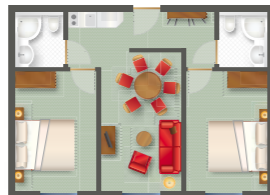
MOHNENFLUH
Apartment, 4 people, 54 m²



€ 250

2 double rooms, living room with kitchenette, bathroom, separate WC, balcony

HASENFLUH
Apartment, 4 people, 57 m²



€ 260

2 double rooms (beds can be made into twin beds), living room with kitchenette, 2 shower/WCs, no balcony

OMESHORN
Apartment, 4 people, 61 m²



€ 280

2 double rooms (one double bed can be made into twin beds), living room with kitchenette, bathroom, separate WC, shower/WC, balcony

All prices are per accommodation unit per day (no breakfast) with normal occupancy. Prices do not include tourist tax (€3.80 per person per day for guests 14 and older).

SUMMER PRICES

JUNE TO SEPTEMBER 2023



06.07.23—10.09.23

WIESELE
Apartment, 4 people, 63 m²



€ 280

2 double rooms (one double bed can be made into twin beds), living room with kitchenette, bathroom, separate WC, shower/WC, terrace

ROTE WAND
Apartment, 5 people, 69 m²



€ 305

2 double rooms (one double bed can be made into twin beds), 1 single room, living room with kitchenette, bathroom/WC, shower/WC, balcony

KARHORN
Apartment, 5–6 people, 71 m²



€ 305

A combination of Kriegerhorn and Mohnenfluh: 2 double rooms and 1 room with a queen size bed (1 bed/140 cm wide for 1–2 people), living room with kitchenette, 2 bathrooms, 2 separate WCs, balcony

RÜFIKOPF
Apartment, 6 people, 73 m²



€ 360

2 double rooms, 1 room with bunk beds, living room with kitchenette, bathroom, separate WC, shower/WC, balcony

WÖSTER
Apartment, 6 people, 79 m²



€ 360

3 double rooms (2 double beds can be made into twin beds), living room with kitchenette, bathroom, separate WC, shower/WC, balcony

All prices are per accommodation unit per day (no breakfast) with normal occupancy. Prices do not include tourist tax (€3.80 per person per day for guests 14 and older).



BOOKING INFO

All prices are per accommodation unit per day with normal occupancy.

EXTRA

TOURIST TAX for ages 14 and older	€3.80 per person per day
BUFFET BREAKFAST Adults, children aged 14 and older Children aged 5–14 Children under 5	€20 per person per day €10 per person per day free
ADDITIONAL GUESTS IN AN APARTMENT Adults, children aged 14 and older Children under 5 Children aged 6–13	€20 per person per day free €10 per person per day
DOGS On request (only permitted if the dog is under constant supervision)	€25 per dog per day

FILOMENA SERVICE

Masseur, solarium, laundry service, babysitter, breakfast/newspaper service	Prices on request
--	-------------------

GOOD TO KNOW

CHECK-IN / CHECK-OUT	from 4 pm / by 10 am
----------------------	----------------------

DEPOSIT
Secure your reservation by making a deposit of 30% of the total price. The deposit is due on the day you book and can be paid by credit card (Visa or Euro-/Mastercard) or bank transfer, which is our preference. On site, we accept debit card, Visa, Eurocard or cash payments.

GENERAL TERMS AND CONDITIONS (GTCs)
The Austrian General Terms And Conditions For The Hotel Industry apply. Details can be found on our website.

CANCELLATION CONDITIONS (extract from our GTCs, clause 5):	
Up to 3 months before arrival date	no cancellation fee
Up to 1 month before arrival date	40% of the total accommodation price
Up to 1 week before arrival date	70% of the total accommodation price
In the last week before arrival	90% of the total accommodation price

CANCELLATION INSURANCE

We offer you insurance cover through our partner, Europäische Reiseversicherung. More information: www.filomena.at/en/booking-information



MY LECH CARD

A summer bursting with variety

The My Lech Card includes a trip up to the Rüfikopf mountain, relaxation in the forest swimming pool, the exciting children's programme, free travel on the hiking bus, e.g. into the Zugertal valley to the "most beautiful place in Austria 2016" (tolls included), and so much more!

PRICES

1-2 days: € 33
3-4 days: € 52
5-7 days: € 65
8-14 days: € 94
15-21 days: € 117

Children up to 14 (i.e. born in 2009 or later) get the My Lech Card for free. Senior citizens 70 or over (i.e. born in 1953 or earlier) receive a 30% discount.

EXPERIENCES

SUMMER CABLE CARS with breathtaking panoramic views:
Rüfikopf cable car, Oberlech cable car, Petersboden chairlift, Seekopfbahn cable car, Steffisalp-Express

PANORAMA BUS through the Zugertal valley and **HIKING BUSES** to Lech, Zug, Oberlech, Stubenbach, Zürs and the nearby villages of Warth, Schröcken and Elbigenalp in the Lechtal valley

ENTER THE ZUGERTAL VALLEY the Spullersee and Formarinsee lakes, the Steinernes Meer karst plateau, the Lechweg trail or take a hike to the Freiburger, Ravensburger or Göppinger mountain huts

CHILDREN'S ADVENTURE PROGRAMME

From 3 July to 8 September 2023 for children aged 5 to 14

Monday: climbing on the crag or a day's play in the forest camp

Tuesday: riding at the Alpine ranch or canyoning at the forest camp

Wednesday: canyoning at the forest camp or riding at the Alpine ranch

Thursday: archery and Arlenzauberweg trail or climbing on the crag

Friday: a day's play in the forest camp or archery and Arlenzauberweg trail

FAMILY PROGRAMME at weekends

Saturday: canyoning, Sunday: climbing on the Rüfikopf mountain

"LECH ERLEBEN" Locals invite you to enjoy some unique activities

GUIDED THEMED HIKES

Monday: herbal hike

Tuesday: In the Footsteps of the Walser People – the story of how Lech came to be settled

Wednesday: Geoweg geological excursion

Thursday: e-bike tour

Friday: panorama tour of the Rüfikopf mountain up to the Stuttgarter Hütte hut

Friday: sunset on the Rüfikopf mountain

FOREST SWIMMING POOL 25 m sports pool, bubble loungers, massage jets, slide, children's swimming lessons (6 July to 7 September 2023)

LECH GOLF ACADEMY one day green fee with driving range, putting green and a chipping and pitching area with bunker near the Berghof practice facility

AND LOTS MORE E-bike tour, bowling, Stuben e-trial park, guided tour of Skyspace Lech, mountain breakfast, Rüfikopf adventure evening, admission to the Lech Museum and Huberhus, bookshop, bowling (one hour)





OUTDOOR CARD

The Arlberg Alpin action programme for grandchildren, grandparents and everyone in between

Sports enthusiasts and adventure seekers can get even more enjoyment out of their summer holiday with our Outdoor Card. Accompanied by the Arlberg Alpin Team and professional mountain guides, you can enjoy marvellous panoramic views while hiking and climbing in the surrounding mountains, following an e-bike route, canyoning in crystal-clear mountain lakes or having a go at 3D archery. The shuttle bus (included in the price) will collect you and your family from right outside our hotel and bring you back.

PROGRAMME

- From 6 July to 8 September 2023
- Monday: e-bike tour (excludes e-bike hire)
- Tuesday: climbing on the Rūfikopf mountain
- Wednesday: family canyoning
- Thursday: archery in the Burgwald
- Friday: family canyoning

FUN AND ACTION FOR EVERYONE

Share the adventure and stay active. The Outdoor Card is included in your overnight stay.



YOGA IN THE MOUNTAINS with Marilena Walch

With Lech's impressive mountain scenery as a backdrop, enjoy relaxing yoga with dynamic, powerful yet calming Asanas under the expert guidance of our instructor Marilena. Vinyasa Yoga promotes endurance, improves concentration and strengthens both mind and body. The goal is to bring movement and breath into harmony. This yoga programme is suitable for curious beginners as well as passionate yoga enthusiasts. Two sessions per week are included in the My Lech Card.



INCLUDED IN THE MY LECH CARD

PLUS

- Private session (90 minutes)
- For 1-2 people: €70
- For 3-6 people: €90



“LECH ERLEBEN”

Nature and its incomprehensible power

Lech Zürs is a place that people long for and where they find inspiration. The “Lech erleben” (“Experience Lech”) programme sees locals share their skills and knowledge with you.

PROGRAMME

From 3 July to 15 September 2023

Monday	8:45 am	Bike and hike with Vinzenz Wingelmayr
Tuesday	8:45 am	Pilates on the mountainside with Uli Alber
Wednesday	8:45 am	Yoga on the mountain with Marilena Walch
	8:45 am	Chateau Madloch – hiking to the source of the Lech river with Carolin Feigenspan
Thursday	3:15 pm	The historic Zuger Säge sawmill with Martin Jochum
Friday	8:45 am	Yoga on the mountain with Marilena Walch
Saturday	3:00 am	Sunrise hike up the Mohnenfluh mountain (2,542 m) with Martin Murr

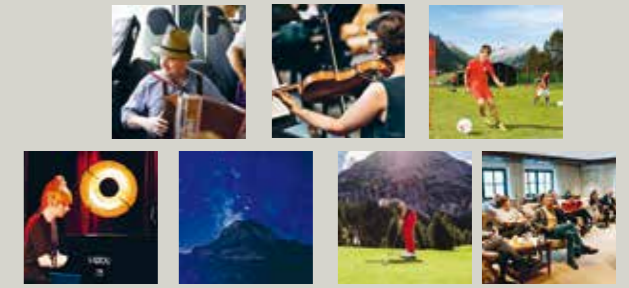
Sign up at www.lechzuers.com



YOGA AND PILATES ON THE MOUNTAINSIDE
 Start the day the active way, with panoramic mountain views thrown in



SUMMER EVENTS



JUL	13–16	LITERARICUM LECH Lech Discussing some of the classics of world literature
	15	VILLAGE FESTIVAL Lech
	21–23	ANGLERS’ FESTIVAL Zug fish pond
	29	MUSICIANS’ DAY hosted by the participating businesses Join us as folk musicians, singers and dancers from Austria, Germany, Switzerland and South Tyrol meet and make music in Lech. Various different musical styles highlight the great musical diversity of the entire Alpine region.
JUL / AUG	31–6	LECH CLASSIC FESTIVAL sport.park.lech The Lech Classic Festival has been held in Lech since 2012. www.lech-classic-music-festival.com
AUG	6	MOUNTAIN FESTIVAL Rüfikopf restaurant
	6–11	FOOTBALL CAMP Highly qualified, licensed football coaches and sports educators train with children and teens aged 6–16.
	9–12	JAZZ STAGE sportpark.lech
	12	LAURENTIUS’ NIGHT Rüfikopf restaurant
	19	THE WHITE RING Lech The trail challenge
	27	ZUG VILLAGE FESTIVAL Zug
	9	DYNAFIT TRANSALPINE RUN Lech
SEP	19–24	PHILOSOPHICUM sport.park.lech

See www.lechzuers.com for details

OUR HIGHLIGHTS

Anglers’ festival, musicians’ day and jazz stage

FILO'S SUGGESTED EXCURSIONS

Lech is your springboard to a wealth of adventures

There's so much here to discover and explore in the mountains! Should you fancy a day out, we've put together a few tips for you.

If you'd like your children to get to know the wildlife in the Alps, there are not one but several Alpine zoos in the area. And it's easy to combine a trip to see the ibex, lynx and friends with a visit to one of our Alpine towns and cities: Bludenz, Feldkirch, Bregenz or Innsbruck.

If you're interested in the culture of Vorarlberg, we recommend a visit to a museum: the Frauenmuseum Hittisau (Women's Museum) is famous for its stimulating exhibitions, while the Rolls Royce Museum is great for car fans. And there's also inatura, an interactive natural science museum whose 40 Science Zones will amaze nature lovers.

HIGHLIGHT

How about a trip to Germany's most family-friendly theme park, the Ravensburger Spielaland? This park guarantees fun for all ages, including XXL versions of classic games and 70 other attractions. Alternatively, immerse yourself and your children in the new themed world featuring The Mouse and her best friend, the blue elephant, from the popular German children's television show complete with Muse Cinema and astonishing 3D effects.

TIP

CULTURE (blue)
NATURE (green)
FAMILY (orange)

Keen on a leisurely holiday? Prefer to leave your personal car behind and take the bus? The Arlberg Express puts on a weekly programme of excursions.

<https://arlbergexpress.com/en/>



RAVENSBURGER SPIELELAND

www.spielaland.de
in Meckenbeuren



BREGENZ FESTIVAL

www.bregenzerfestspiele.com
in Bregenz



WILDLIFE PARK

www.wildpark-feldkirch.at
in Feldkirch



BEARLAND PARK SONNENKOPF

<https://www.sonnenkopf.com/en/bearland> Klösterle



SCHLOSS NEUSCHWANSTEIN CASTLE

www.neuschwanstein.de
in Hohenschwangau



THE HOLZGAU SUSPENSION BRIDGE

www.lechtal.at/natur-parkregion-lechtal/kultur-natur-erlebnisse/holzgaue-haengebruecke in the Lechtal valley



VORARLBERG MUSEUM

www.vorarlbergmuseum.at
in Bregenz



PFÄNDER ALPINE WILDLIFE PARK

www.pfaender.at
on Lake Constance

21 km

87 km

22 km

93 km

93 km

24



WERKRAUM

www.werkraum.at
Bregenzerwald



WÄLDERBÄHNLE MUSEUM

www.waelderbaehnle.at
Bregenzerwald



KÄSESTRASSE

www.kaesestrasse.at
Bregenzerwald



INATURA - INTERACTIVE NATURAL SCIENCE MUSEUM

www.inatura.at
Dornbirn



SHIP CRUISE ON LAKE CONSTANCE

www.vorarlberg-lines.at
Bregenz on Lake Constance

50 km

45 km

7 to 50 km

85 km

93 km



SILVRETTA-BIELERHÖHE

www.silvretta-bielerhoehe.at
Partenen/Galtür



LÜNERSEEBAHN CABLE CAR

www.luenersee.at
Brand-Schattenlagant toboggan run



WOMEN'S MUSEUM

www.frauenmuseum.at
in Hittisau



ROLLS ROYCE MUSEUM

www.rolls-royce-museum.at
in Dornbirn



MAINAU ISLAND

www.mainau.de
Lake Constance

82 km

51 km

60 km

85 km

93 to 144 km



SWAROVSKI CRYSTAL WORLDS

www.kristallwelten.swarovski.com
Wattens



ALPENZOO INNSBRUCK

www.alpenzoo.at
Innsbruck



ALPINE COASTER GOLM

www.golm.at
in Vandans/Montafon



WONDERWALKINGWAY / SENNHÜTTE MOUNTAIN HUT

www.sensationell.at
St. Anton



OUTDOOR HIGHLIGHT

www.area47.at
in the Ötztal valley

135 km

121 km

45 km

19 km

73 km

Photo credits: Schloss Neuschwanstein castle, Anton J. Brandl, Bayerische Schlösserverwaltung, Feldkirch game park, Sonnenkopf, Nikolai Dörner, Swarovski Crystal Worlds, Bregenz Festival, ondereart, Alpine Coaster Golm, Mainau Island, Alpinarium Galtür, Women's museum, Ines Agostinelli, Alpine Wildlife Park, Ravensburger Spielaland, Vorarlberg museum, Adolf Bereuter, Cukrowicz Nachbau, Architects, inatura, Rolls Royce Museum, Alpenzoo zoo, Wonder hiking trail, Sennhütte mountain hut St. Anton am Arlberg, Käsestrasse L. Bärthold, Lünarsee lake, Illwerke Tourism, Silvretta-Bielerhöhe, Achim Mende, Holzgau suspension bridge, Lechtal Tourism/KDG Medioscope, Wildlife Park, werkraum, Florian Holzher.

25

WHAT WE ARE PROUD OF

Lech has succeeded in preserving its character as a former community of Walser people. The unique timelessness of the village makes it all the more attractive.



Lech was voted 2004's most beautiful village in Europe due to its respectful treatment of nature. In 2017, our village was ranked sixth on the list of the 30 most beautiful villages in Europe (JATA/Japanese Association of Travel Agents).

In 2019, Lünensee lake was named the "Most beautiful place in Austria" (9 places, 9 treasures). Körbersee lake (left) won the same accolade in 2017, as did Formarinsee lake (right) in 2015.

OUR
PARTNERS



mehr raum
mehr zeit



Design: Studio Lederer, Translation: Covi, Wurzer & Partner, Photography: Christa Engstler, Alexander Kaiser, Lech Züri Tourismus; Hanno Mackowitz, Christoph Schöch, Peter Mathis, Leo Baumgartner, Hans Wiesenhofer, Bernadette Otter, Daniel Zangerl, Lisa Berner, Arlberg Alpin; Georg Schnell; Lech Philosophicum, Florian Lechner

FEEL JOY

**FILO
MENA**

Aparthotel



»Filomena«
Geschwister Walch GmbH & Co KG
Omesberg 211
6764 Lech am Arlberg
Austria
T. +43 (0)5583 2211
www.filomena.at/en
info@filomena.at